A black and white photograph of a coastal landscape. In the foreground, a tall, thin lighthouse tower stands on a rocky outcrop. The background shows a body of water with some distant landmasses or islands. The overall scene is somewhat desolate and atmospheric.

clydeside stories  
100 objects

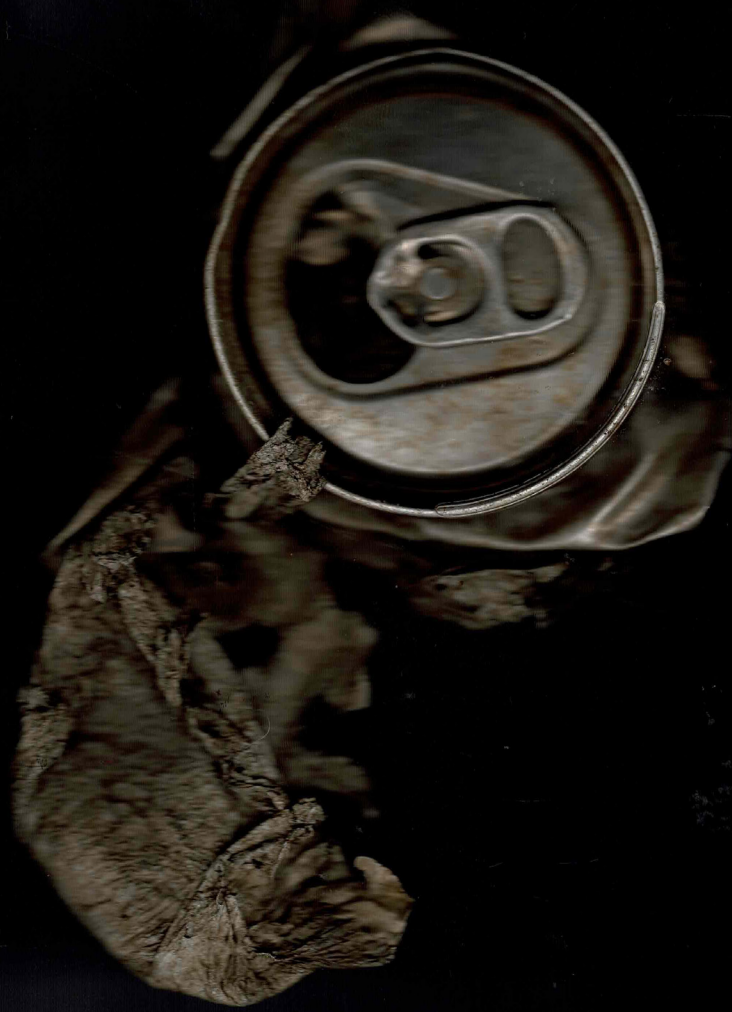
a meditation on the clyde; processing the  
passing of time, the development of industry &  
technology, & our relationship to this river through  
materials — treasure.

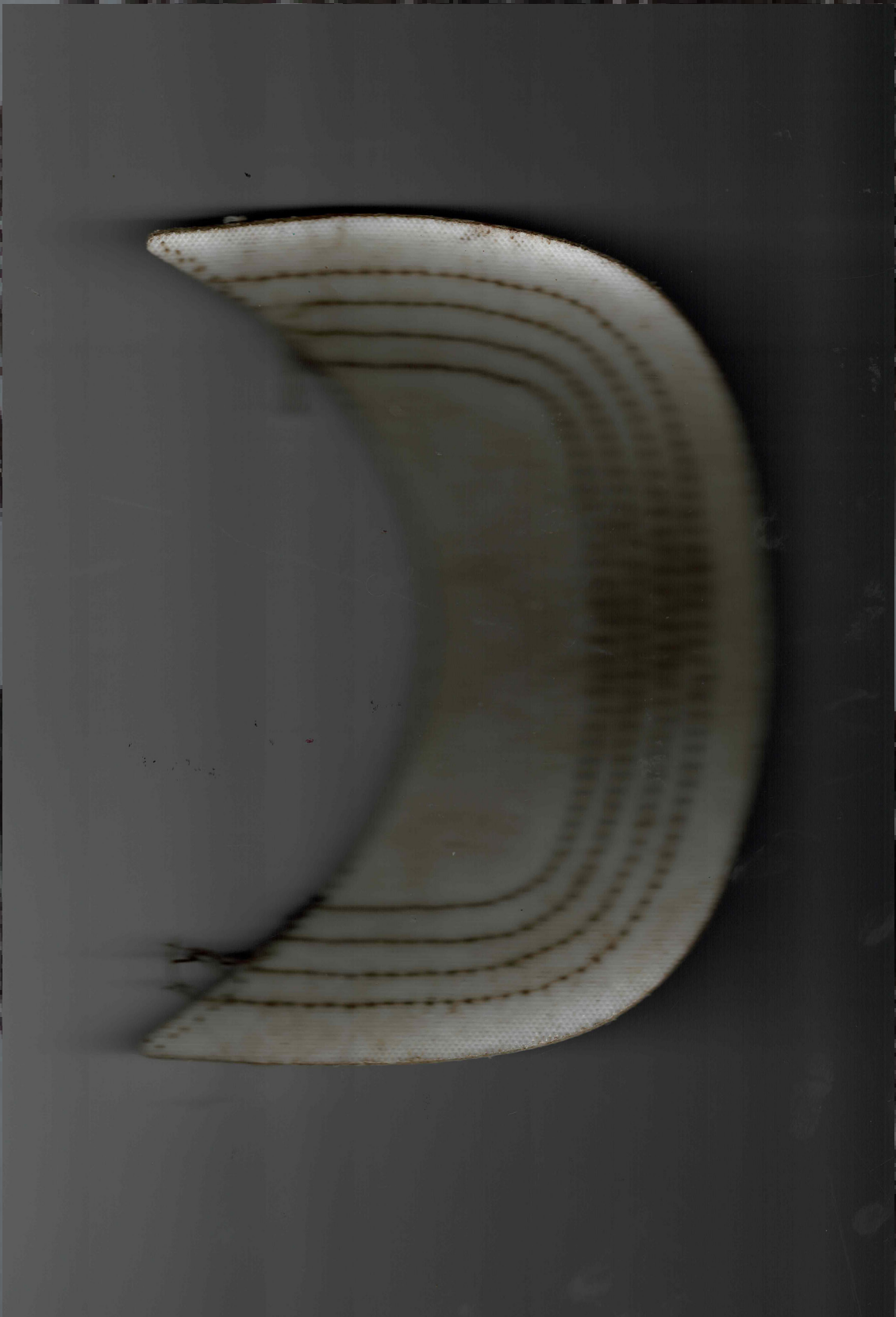
these are our objects.

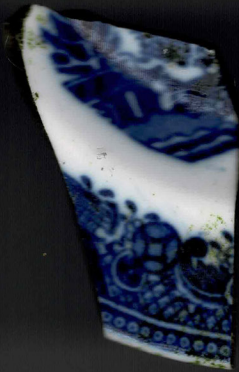
they tell our stories.

are we listening?







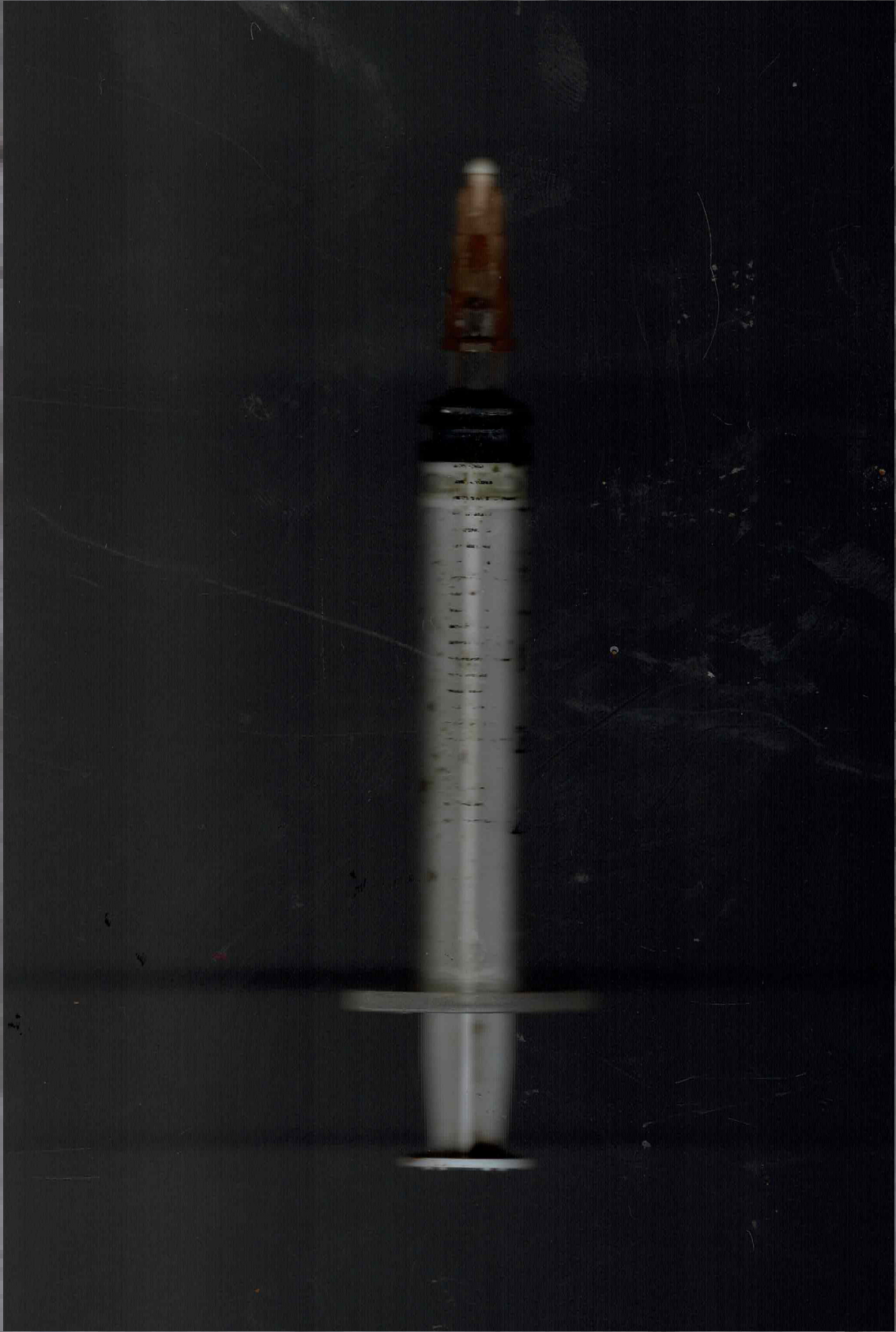








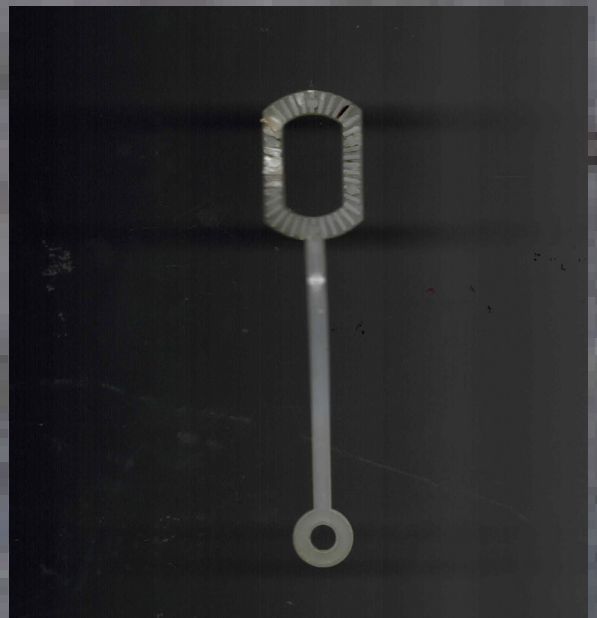
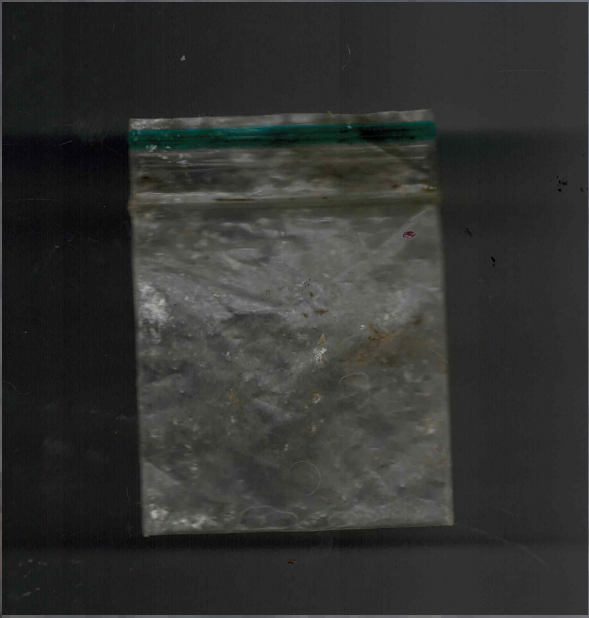




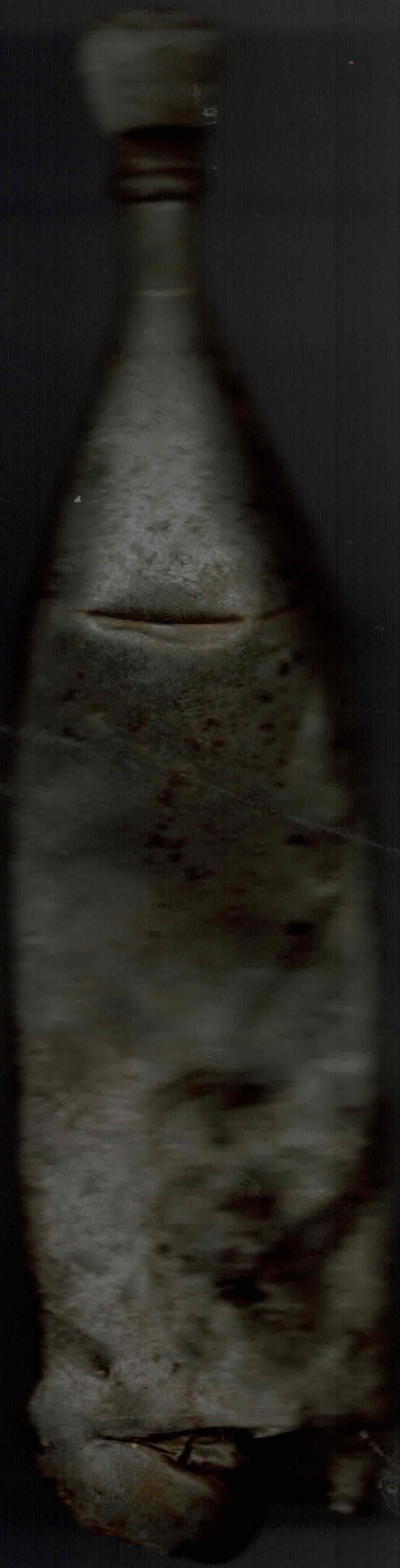


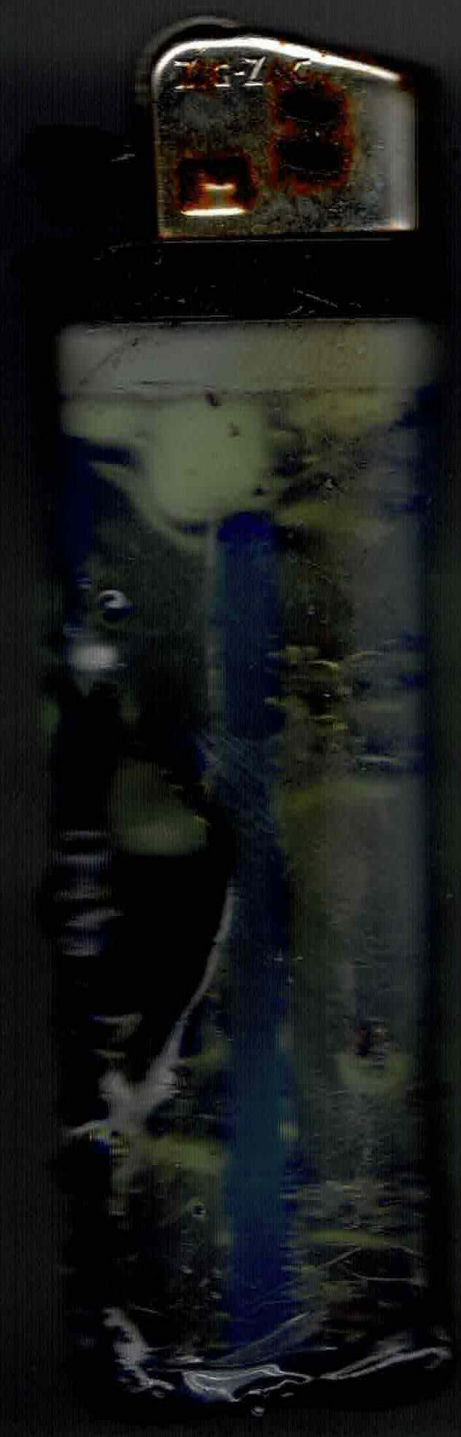




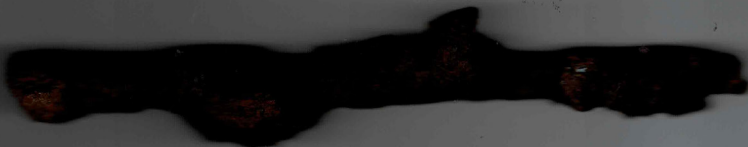
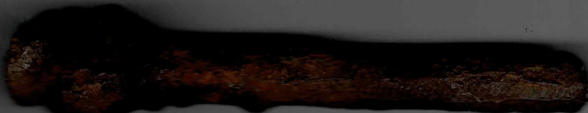
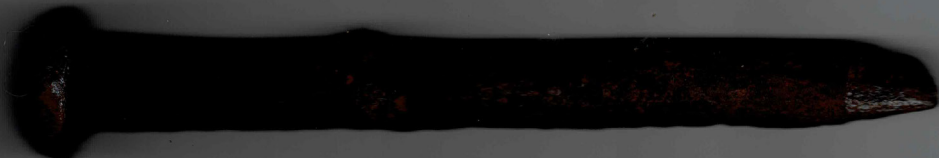


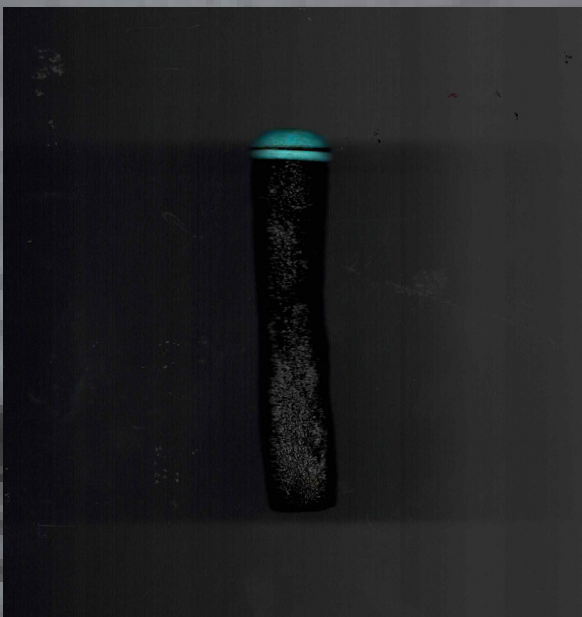
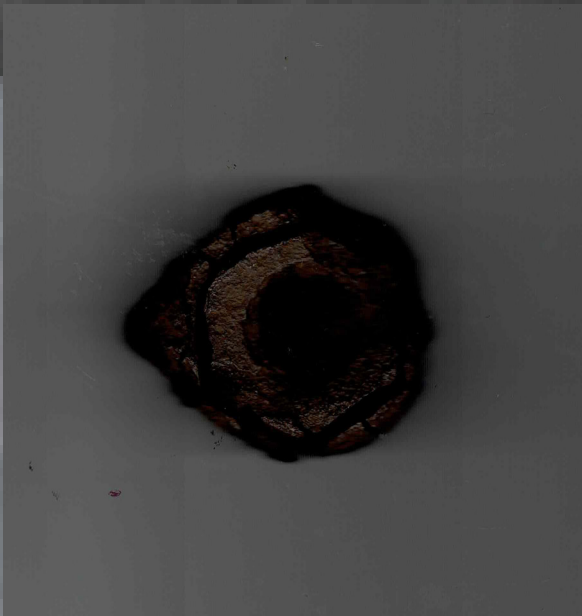
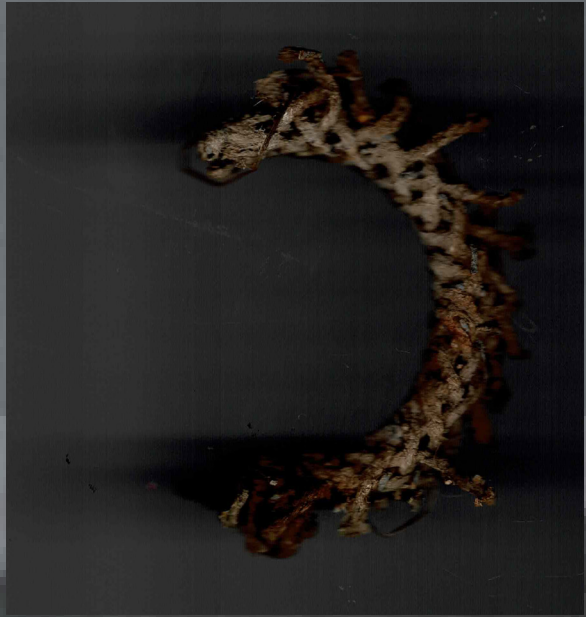
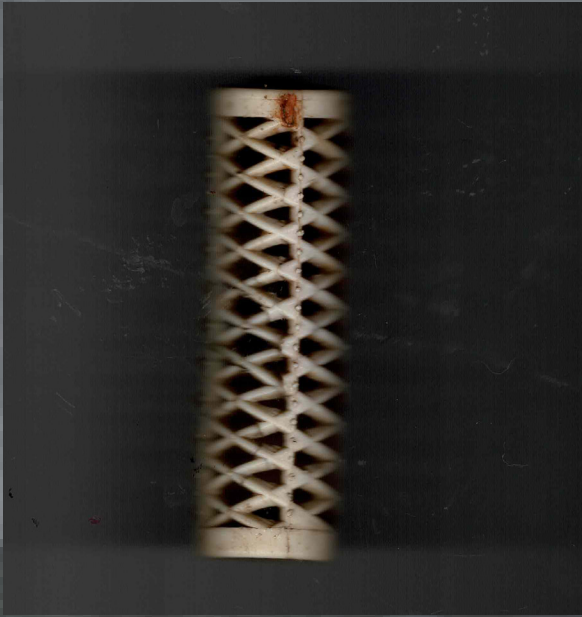










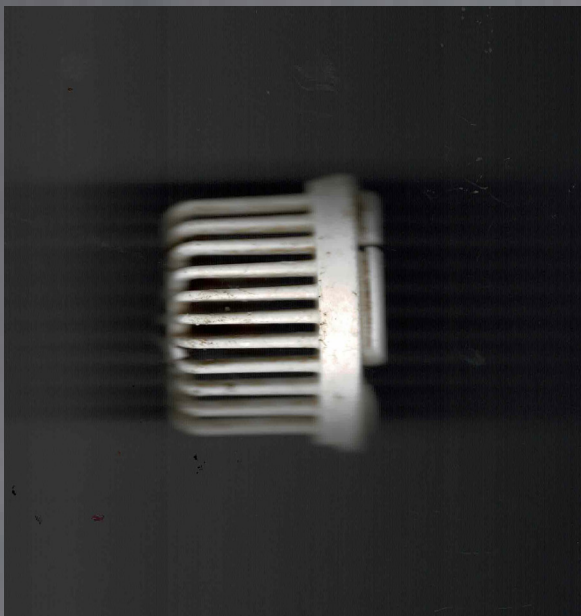
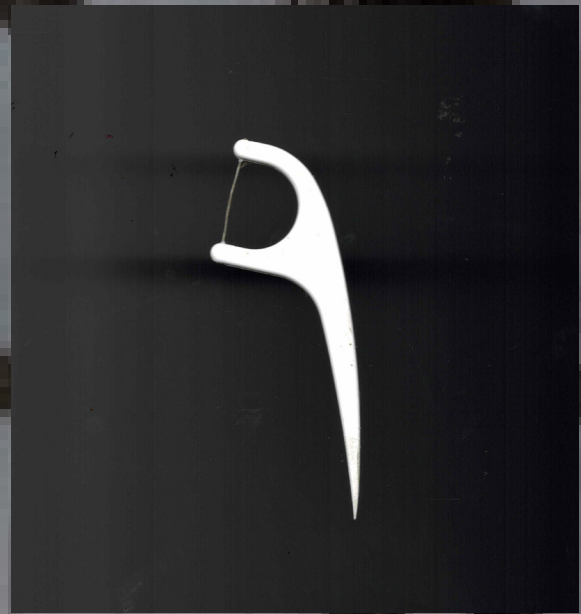
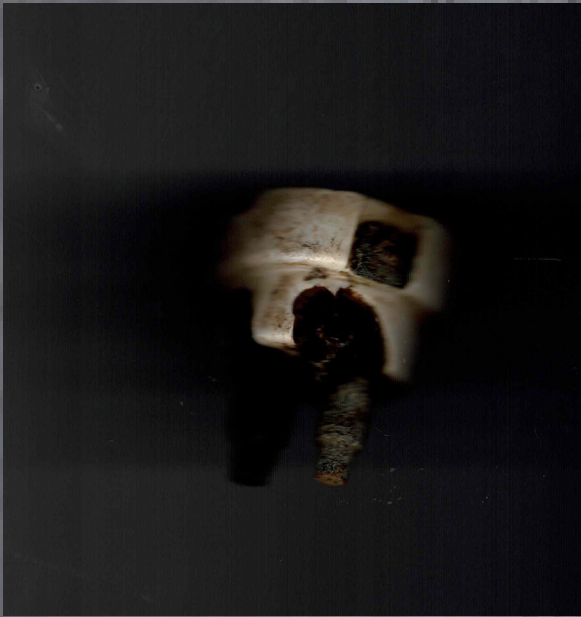










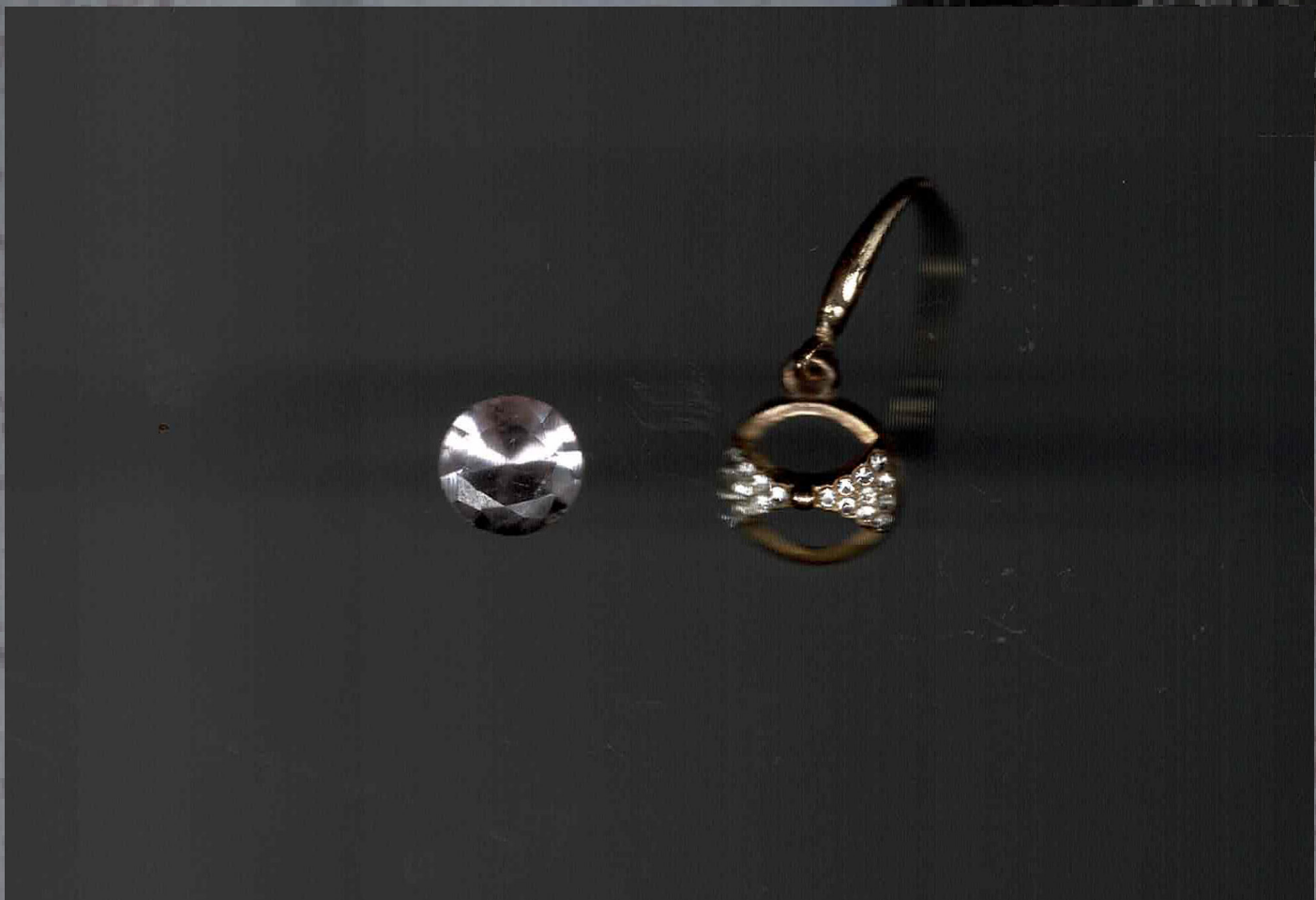




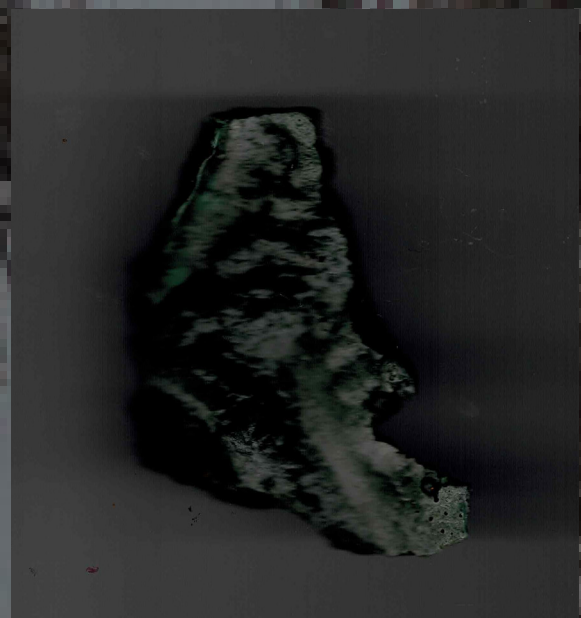
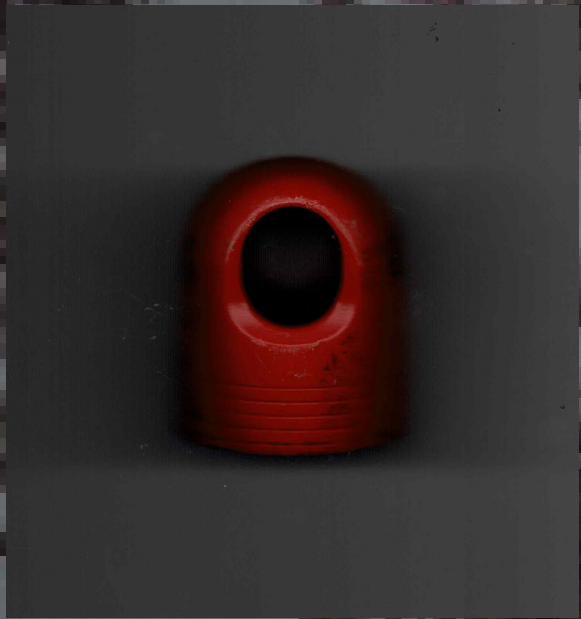
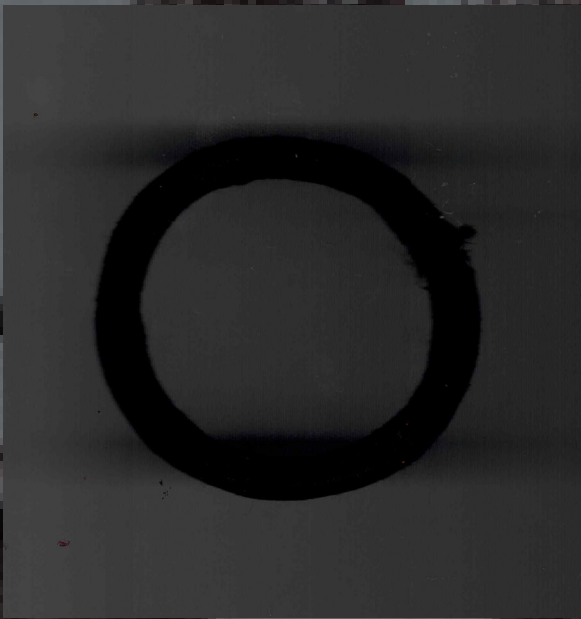




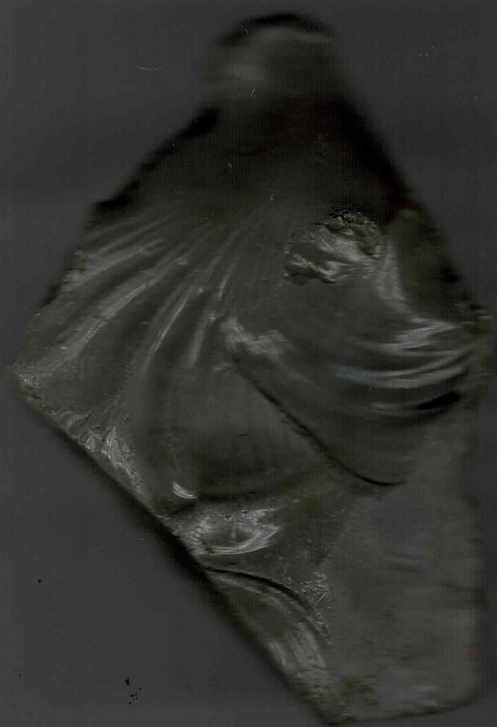












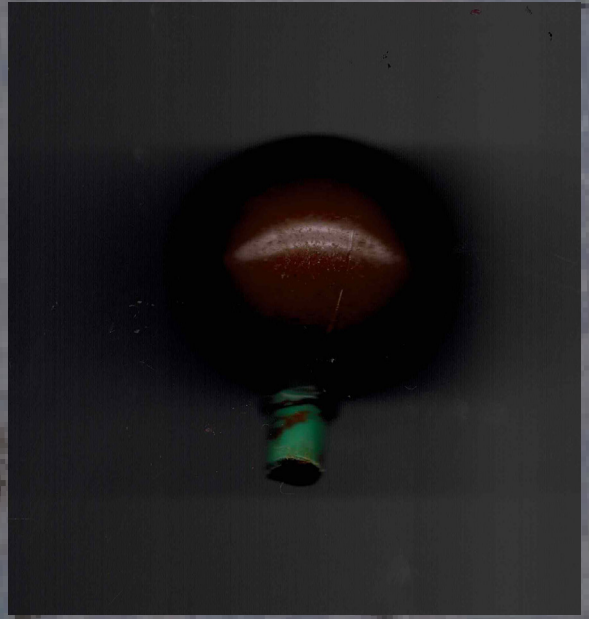
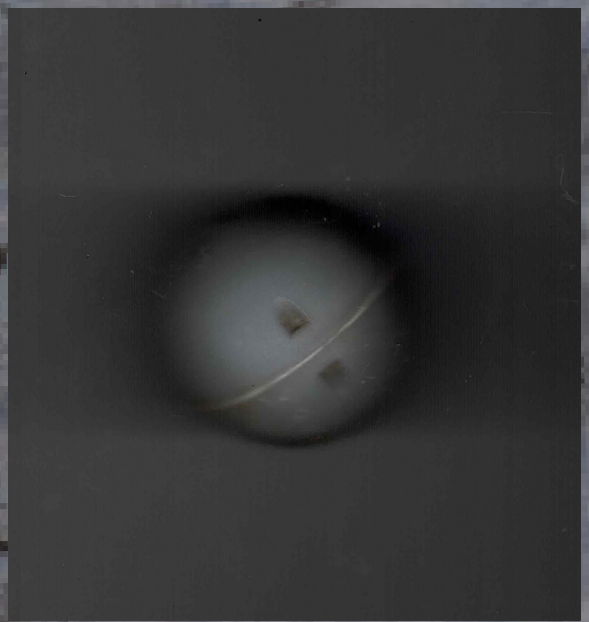




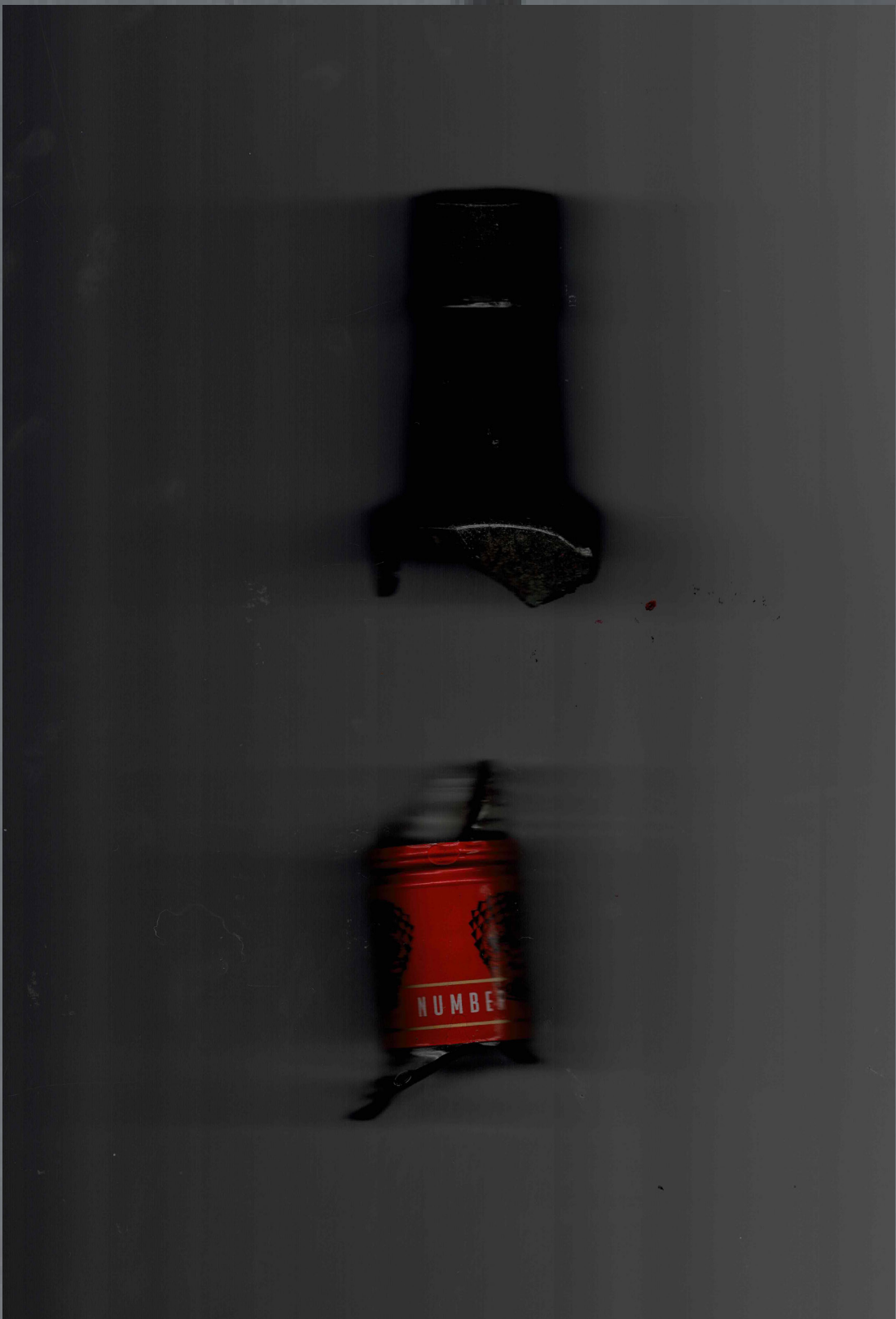


1019

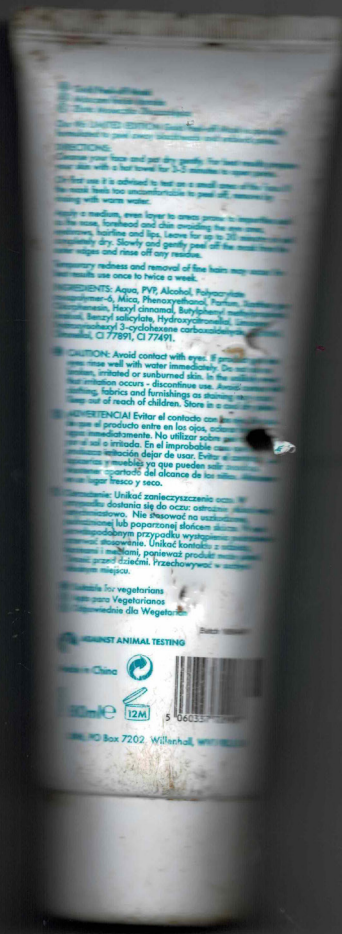
1019











© 2010 The Body Shop  
The Body Shop  
100% VEGAN

**DIRECTIONS**  
Cleanse your face and pat dry gently. For best results, use with a hot towel for 2-5 minutes to open pores. Use for use if it is advised to test on a small area of the face if the skin feels too uncomfortable to peel off, remove by rinsing with warm water.

Apply a medium, even layer to areas prone to roughness, such as the nose, forehead and chin, avoiding the eye area, eyebrows, hairline and lips. Leave for up to 20 minutes, then completely dry. Slowly and gently peel off the mask. Rinse your skin and rise off any residue.

**INGREDIENTS:** Aqua, PVP, Alcohol, Polycaprolactone, Carbomer-4, Mica, Phenoxypolone, Parfum, Butylphenyl Methylpropanolamine, Hexyl cinnamal, Butylphenyl methylpropylcarbamyl 3-(3-chlorobenzoate) carbonyl, Carbomer, CI 77891, CI 77491.

**CAUTION:** Avoid contact with eyes. If product gets into eyes, wash with water immediately. Do not use on sensitive, irritated or sunburned skin. In the unlikely event that irritation occurs, discontinue use. Avoid contact with clothing, fabrics and furnishings as staining may occur. Keep out of reach of children. Store in a cool, dry place.

**PRECAUCIONES:** Evitar el contacto con los ojos. Si el producto entra en los ojos, aclarar inmediatamente. No utilizar sobre piel sensible, irritada o quemada. En el improbable caso de que se produzca irritación, dejar de usar. Evitar el contacto con la ropa y los muebles ya que pueden sufrir manchas. Mantener fuera del alcance de los niños. Guardar en un lugar fresco y seco.

**UWAGI:** Unikaj zanieczyszczenia oczu. W przypadku dostania się do oczu: ostrzeżenie: oczy natychmiast przemyć wodą. Nie stosować na skórę wrażliwą, podrażnioną (lub poparzoną) słonecznym światłem. W przypadku wystąpienia podrażnienia przestań używać. Unikaj kontaktu z odzieniem, meblami i dywanami, ponieważ produkt może spowodować zabrudzenie. Przechowywać w suchym miejscu.

**VEGETARIAN FRIENDLY**  
Suitable for vegetarians  
Apto para vegetarianos  
Adatto per vegetariani

**VEGAN ANIMAL TESTING**  
Cruelty Free  
China  
5 06033 12M

Box 7202, Willehald, Weymouth







